



KMC MINING & ENGINEERING SERVICES

Trusted and Preferred Engineering Services Partner for the New Age of Mining and Infrastructure Development

Tanzania's Leading Mine Services Contractor Company

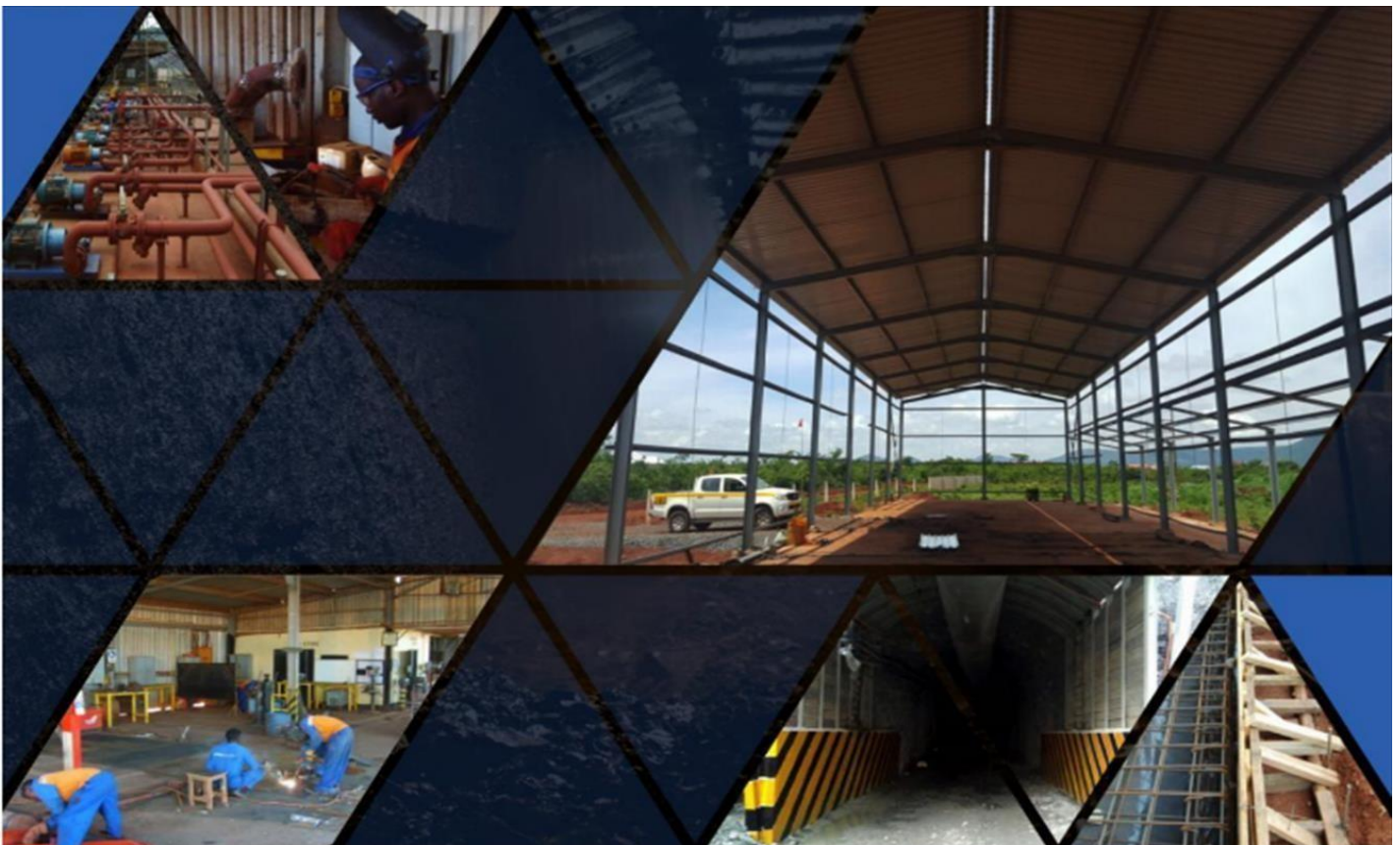
Mining & Engineering Solutions



About Our Company



KMC MINING & ENGINEERING SERVICE COMPANY LIMITED (KMC) is a registered Class Six CRB contractor and a fully certified distributor, importer, and supplier under Tanzania's Government Chemist Laboratory Authority (GCLA). We are committed to delivering world-class mining and engineering services, guided by our values of safety, integrity, innovation, and performance excellence. With a proven record across Tanzania, Uganda, Malawi, Kenya, and the Democratic Republic of Congo, we bring global best practices to East Africa's growing energy and mining industries.



We understand how important health and safety are to our clients, and that is why we are committed to the best services to our clients for safer productivity.

Going all the way to ensure that we bring to you, our valued best-experienced miners, engineers, geologists and surveyors to improve safety and productivity in your working areas.

When it comes to health and safety in the workplace, we understand that there is no price tag to the health, safety and lives of a company's workforce, and the most valuable assets to any company is its PEOPLE and their SAFETY FIRST.

We value the business needs of our customers and put the health and safety of their workforce at the heart of what we do to ensure that we provide the best mining and engineering services required and beyond.



KMC Mining & Engineering Services

Our expertise spans geotechnical engineering, geological surveys, geophysical site investigations, borehole drilling, civil engineering, construction chemicals, explosives supply, training, and consulting. With an experienced workforce drawn from leading mining operations such as Bulyanhulu, Geita, and Tulawaka Gold Mines, KMC is uniquely positioned to provide innovative and reliable solutions that advance safety and productivity for our clients.

Why Choose KMC?

1. Proven expertise from leading mining projects in East Africa
2. Competitive and transparent pricing with continuous technical support
3. Short delivery led times to ensure operational efficiency
4. Commitment to health, safety, and environmental stewardship
5. Personalized service delivery with a client-first approach

Our Commitments to our Clients

We offer a wide range of integrated services designed to support mining, civil construction, and energy projects.

KMC has successfully executed major projects across the region, including hydropower feasibility studies, geotechnical investigations, mining support systems, and infrastructure rehabilitation. Notable projects include:

- Geotechnical and soil profiling for Songwe River Basin Hydropower Project (Tanzania/Malawi)
- Subsurface foundation studies for Kikagati Hydropower Plant (Tanzania/Uganda)
- Underground support and QA/QC at Bulyanhulu Gold Mine
- Design and implement portal support and steel fabrication at Geita Gold Mine
- Ground stability assessment at Kihansi Hydropower Plant
- Plant installation and workshop construction at Shanta Gold Mine Singida

Our Services

1. Mining Chemicals

We supply a number of common flotation chemicals for gold mine

- Collectors like Xanthates (e.g., Potassium Amyl Xanthate – PAX),
- Modifiers like Lime (CaO), Sodium Cyanide (NaCN), Copper Sulphate (CuSO_4),
- Activators like Copper Sulphate (CuSO_4), Lead Nitrate ($\text{Pb}(\text{NO}_3)_2$)

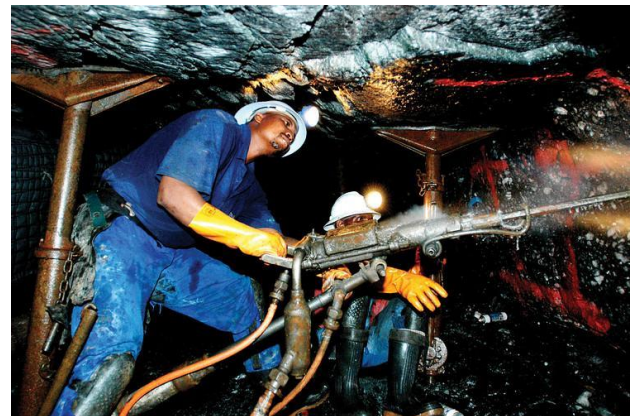
Other Gold leaching products we can supply includes but not limited to:

- Sulphuric Acid (H_2SO_4) - strong acid that is widely used for pH adjustment,
- Hydrogen Peroxide (H_2O_2) – base solution to solve a variety of water, wastewater, and air pollution treatment.
- Activated Carbon (C) - an organic polymer with very high adsorption performance,



2. Geotechnical Engineering

- Lugeon (Packer) Tests – We provide in situ permeability tests using Lugeon tests.
- AT & OTV Services up to 4000m holes.
- Soil Sampling and laboratory tests (Uniaxial and Triaxial test),
- Rock Sampling (coring) laboratory test (Uniaxial and Triaxial test),
- Geotechnical Logging services,
- Geotechnical Mapping services,
- VW Piezometer installation and troubleshooting, et.c



3. Construction Chemicals

From structural Repair and Protection technology, Flooring, Concrete Admixtures, waterproofing chemicals, performance grouting; to mining construction works. With full GCLA approval KMC has a long best relationship with Manufacturer of these products in Africa and is the main supplier of these products in Tanzania, Kenya, Uganda and DRC.



4. Civil Engineering



From Planning, designing and implementation of construction works for the public. KMC Mining has over five (5) years construction experience under Class Six (6) CRB's Civil and Building registration category. Working with governments, NGO's, private companies and with individuals; KMC is focused to delivering world standard civil engineering services.

5. Water Treatment Chemicals



KMC is a supplier of the best water treatment across Africa. We have commendable water treatment stock in our warehouses across Tanzania and able to supply you the quantities you require at a very competitive price to your door step. Here are the categories of the product ranges we can supply you:

- ✓ Industrial water treatment
- ✓ Municipal water supply systems
- ✓ Wastewater treatment plants
- ✓ Swimming pools/recreational water facilities
- ✓ Cooling towers and boilers

6. Explosive Devices Supply



Among other kinds of explosive devices, KMC supplies:

- ✓ DET CORD - 10gm per meter, 250m,
- ✓ Ammonium Nitrate 25Kg,
- ✓ TRUNKLINES, Trunkline/Surface connector 42,
- ✓ Cast booster 150g,
- ✓ cartridges - Cartridges' Explosives - All sizes,
- ✓ handmaster - Double detonator 25/500ms, 8.5m, 12m, 15m, 18m, and 21m

Our Technical Services

1. Geological and Geotechnical Services

- Geological surveys and site mapping
- Subsurface soil profiling and geotechnical investigations
- In-situ testing (permeability, penetration, deformation, density, etc.)
- Borehole drilling with core logging and sampling
- Geotechnical logging, mapping, and piezometer installation, etc.

3. Engineering and Construction Services

- Civil engineering design and implementation
- Structural repair and rehabilitation
- Portal and shaft support systems
- Plant installation and repair
- Fabrication and steel works, etc.

5. Training and Consultancy

- Technical training for mining and geotechnical personnel
- Safety training and workforce capacity building
- Consulting services in ground support, paste backfilling, shotcrete, and QA/QC monitoring
- Advisory services on compliance, sustainability, and best practices, etc.

2. Geophysical Exploration

- Electrical Resistivity Tomography (ERT)
- Seismic Refraction Surveys
- Elastic Wave Tomography
- Floating Seismic Wave Surveys
- Borehole imaging and density logging, etc.

4. Chemical and Explosives Supply

- Supply of mining chemicals: collectors, activators, modifiers, and gold leaching reagents
- Supply of construction chemicals: admixtures, grouts, waterproofing, repair mortars
- Supply of blasting explosives and accessories (ANFO, detonators, boosters, trunklines, det cord)
- Supply of water treatment chemicals for industrial, municipal, and recreational applications

6. Geological & Geotech Drilling

- RC Holes drilling,
- DD Holes drilling,
- Monitoring wells, and
- Water well drilling





THANK
YOU

Contact Us

We promise to offer our clients a wide range of mining and engineering services at a very competitive price.

We continually strive to understand and deliver each and every company's unique service requirement; working environment, and safety standards, and support our clients that they are meeting the highest mining and engineering standards possible with the right support from KMC Mining & Engineering Services.

**Leading Mine Services
Contractor Company**

**Mining &
Engineering Solutions**



Contacts:

Eng. Agnes C. Mchacho

Operations Manager

Email: info@kmcminingtz.com

Cell: 0699783913 | 0757553055



No. 7692

CONTRACTORS REGISTRATION BOARD

CERTIFICATE OF REGISTRATION

This is to Certify that

*KMC Mining & Engineering Services
Company Limited*

is registered as

BUILDING CONTRACTOR

Class Six

Registration No. **B6/1526/05/2022** Category **Local**

In accordance with the provisions of The Contractors Registration

Act No. 17 of 1997

In witness whereof the common seal has been affixed

hereto on this **5th** day of **May, 2022**


Registrar




Chairman

This Certificate is held subject to the By-laws made under the Act.

THE UNITED REPUBLIC OF TANZANIA
MINISTRY OF HEALTH
GOVERNMENT CHEMIST LABORATORY AUTHORITY
P.O. BOX 164, DAR ES SALAAM



REGISTRATION CERTIFICATE

(Made under Section 29 of the ICCA CAP 182)

I hereby certify that **M/S KMC MINING & ENGINEERING SERVICES CO. LTD** of **P.O. BOX 459, MWANZA** with premise at **Plot No. 2, COPCOT BOMBAMBILI street, Geita, Geita** has been approved and registered in Tanzania to operate as **DISTRIBUTOR, EXPORTER, IMPORTER, STORAGE, TRANSPORTER** of chemicals under **Industrial and Consumer Chemicals Act** and granted Registration No. **B003-C000050**

The special conditions attached to this certificate are:

- 1. Awarded Full Registration as per Section 22(1) of the Act**
- 2. Specific Requirements will apply to Highly Hazardous and Restricted Chemicals appearing in the Third, Sixth, Seventh and Eighth schedule to the Act.**

This certificate remains valid from **May 21, 2024** to **May 20, 2029**

Granted on **May 21, 2024**

Signed:

REGISTRAR





C.1

TANZANIA



Certificate of Incorporation of a Company

Section 15

No: 153835403

I HEREBY CERTIFY THAT

**KMC MINING & ENGINEERING SERVICES COMPANY
LIMITED**

is this day incorporated under the Companies Act, 2002
and that the Company is Limited.

GIVEN under my hand at Dar es Salaam this 20th day of
OCTOBER TWO THOUSAND AND TWENTY ONE.



PRINC ASST. REGISTRAR OF COMPANIES

CTIN: 2468372



TANZANIA REVENUE AUTHORITY

CERTIFICATE OF REGISTRATION FOR TAXPAYER IDENTIFICATION NUMBER (TIN)

(ISSUED UNDER SECTION 23 OF THE TAX ADMINISTRATION ACT 2015)

THIS IS TO CERTIFY THAT

KMC MINING & ENGINEERING SERVICES COMPANY LIMITED

HAS BEEN REGISTERED WITH THE TANZANIA REVENUE AUTHORITY
AND ASSIGNED THE TAXPAYER IDENTIFICATION NUMBER

153-835-403

WITH EFFECT FROM: 20 October 2021

TRA LOCATION: GEITA

TAX OFFICE: GEITA

PHYSICAL LOCATION:

STREET / AREA: NEAR BY WAJA GIRLS HIGH SCHOOL

HERBERT M.T. KABYEMELA

COMMISSIONER FOR DOMESTIC REVENUE

OFFICIAL SEAL

NOTE: THE REQUIREMENTS UNDER WHICH THIS CERTIFICATE IS ISSUED ARE STATED OVERLEAF



TANZANIA REVENUE AUTHORITY

Certificate of Registration for Value Added Tax (VAT)

(ISSUED UNDER SECTION 32(4) OF THE VALUE ADDED TAX ACT NO. 10 OF 2014)

THIS IS TO CERTIFY THAT
KMC MINING & ENGINEERING SERVICES COMPANY LIMITED

WHOSE TAXPAYER IDENTIFICATION NUMBER (TIN) IS

153-835-403

HAS BEEN REGISTERED FOR VALUE ADDED TAX (VAT)

AND ASSIGNED VAT REGISTRATION NUMBER (VRN)

40-047851-T

FOR BUSINESS LOCATED AT NEAR BY WAJA GIRLS HIGH SCHOOL
Geita

WITH EFFECT FROM 23 June 2022

GIVEN UNDER MY HAND

THIS 23rd **DAY OF** June 2022

HERBERT M.T. KABYEMELA
COMMISSIONER FOR VAT



NOTE: THE REQUIREMENTS UNDER WHICH THIS CERTIFICATE IS ISSUED ARE STATED OVERLEAF

