



KMC MINING & ENGINEERING SERVICES

Trusted and Preferred Engineering Services
Mine Contract Maintenance and Fabrication Provider

**Tanzania's Leading Mine
Services Contractor Company**

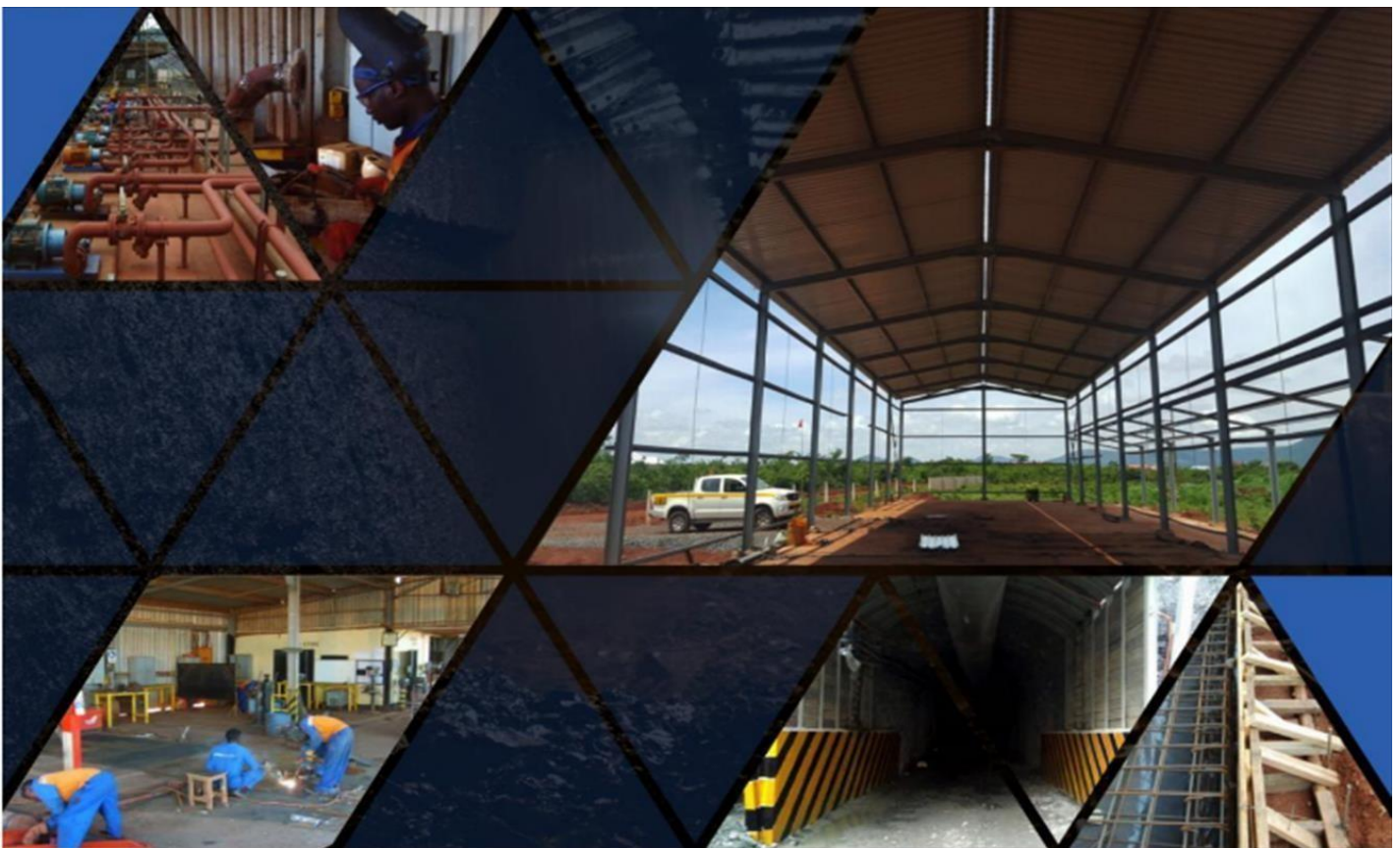
**Mining &
Engineering Solutions**



About Our Company



KMC MINING & ENGINEERING SERVICE COMPANY LIMITED is a class six CRB registered contractor company committed to delivering world-class mining services with safety, integrity, and excellent performance. We are also registered by GCLA to supply mining chemical and laboratory reagents. KMC offers a wide range of mining and engineering services including ground support design, mining chemical supply and installation, fabrications, civil construction, installation and repair of process plant equipment, underground portal/shaft support, and underground rehabilitation.



We understand how important health and safety are to our clients, and that is why we are committed to the best services to our clients for safer productivity.

Going all the way to ensure that we bring to you, our valued best-experienced miners, engineers, geologists and surveyors to improve safety and productivity in your working areas.

When it comes to health and safety in the workplace, we understand that there is no price tag to the health, safety and lives of a company's workforce, and the most valuable assets to any company is its PEOPLE and their SAFETY FIRST.

We value the business needs of our customers and put the health and safety of their workforce at the heart of what we do to ensure that we provide the best mining and engineering services required and beyond.



Why KMC Mining & Engineering Services

We offer the **HIGHEST QUALITY ENGINEERING SERVICES** to our clients from design to implementation. KMC is endowed with vast mining experience experts from Bulyanhulu Gold Mine, Tulawaka Gold Mine, and Geita Gold Mine.

We offer the most **COMPETITIVE PRICING** on our services to our clients that comes with free technical advice and continued structural and system performance monitoring.

We offer the most **COMPETITIVE DELIVERY LEAD TIMES** for goods and services to our clients within a reasonable contracted time. As we continually strive to achieve the shortest Order to Fulfilment Delivery Lead Time to our Mining and Government clients for timely operational efficiency and productivity.

When it comes to **CUSTOMER SERVICE AND EXPERIENCE**, we don't just go the extra mile for our clients, we go all the way; to ensure that we offer our clients the best contractual services complimented with invaluable service experience.

Our Commitment to our Clients

Geotechnical activities
Mining and Construction chemical supplier
Trusted Engineering Solution Advisor
Personal protective equipment supplier
Construction material supplier
Construction activities

Our Services



1. Mining Chemicals

We supply a number of common flotation chemicals for gold mine

- Collectors like Xanthates (e.g., Potassium Amyl Xanthate – PAX),
- Modifiers like Lime (CaO), Sodium Cyanide (NaCN), Copper Sulphate (CuSO_4),
- Activators like Copper Sulphate (CuSO_4), Lead Nitrate ($\text{Pb}(\text{NO}_3)_2$)

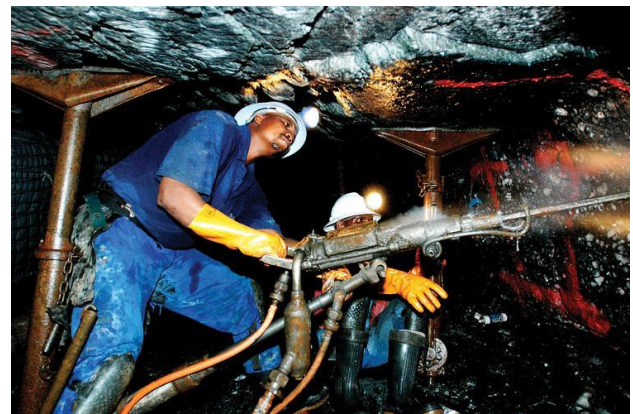
Other Gold leaching products we can supply includes but not limited to:

- Sulphuric Acid (H_2SO_4) - strong acid that is widely used for pH adjustment,
- Hydrogen Peroxide (H_2O_2) – base solution to solve a variety of water, wastewater, and air pollution treatment.
- Activated Carbon (C) - an organic polymer with very high adsorption performance,



2. Geotechnical Engineering

- Lugeon (Packer) Tests – We provide in situ permeability tests using Lugeon tests.
- AT & OTV Services up to 4000m holes.
- Soil Sampling and laboratory tests (Uniaxial and Triaxial test),
- Rock Sampling (coring) laboratory test (Uniaxial and Triaxial test),
- Geotechnical Logging services,
- Geotechnical Mapping services,
- VW Piezometer installation and troubleshooting, et.c.



3. Construction Chemicals

From structural Repair and Protection technology, Flooring, Concrete Admixtures, waterproofing chemicals, performance grouting; to mining construction works. With full GCLA approval KMC has a long best relationship with Manufacturer of these products in Africa and is the main supplier of these products in Tanzania, Kenya, Uganda and DRC.



4. Civil Engineering



From Planning, designing and implementation of construction works for the public. KMC Mining has over five (5) years construction experience under Class Six (6) CRB's Civil and Building registration category. Working with governments, NGO's, private companies and with individuals; KMC is focused to delivering world standard civil engineering services.

5. Water Treatment Chemicals



KMC is a supplier of the best water treatment across Africa. We have commendable water treatment stock in our warehouses across Tanzania and able to supply you the quantities you require at a very competitive price to your door step. Here are the categories of the product ranges we can supply you:

- Industrial water treatment
- Municipal water supply systems
- Wastewater treatment plants
- Swimming pools and recreational water facilities
- Cooling towers and boilers

Our Previous Projects



1. Geotechnical Investigation and Subsurface Soil Profiling at Tanzania/Malawi Hydropower project – Songwe River basin. Geological works and Geotechnical Tests sub-contracted to PaulSam Geo-Engineering Company Limited. Site – Malawi Border.
2. Geotechnical study on the Kikagati Hydroelectric Power Plant construction, a 15.57 MW Tanzania/Uganda Hydropower Project – HV Monopole Foundation on the Kagera river bed. Site Uganda Border – Fully Contracted.
3. Bulyanhulu Gold Mine underground support design, mining chemical supply and implementation of QA/QC, Stope design and optimization. Shotcrete Mix-designs, Paste backfill Mix-designs and optimization study. Workforce sub-contracted.
4. Geita Gold Mine - Portal Support and Steel Set designs, Fabrication and Installation was done by AUMS and PMS at Geita – Nyankanga Project Work force sub-contracted.
5. Kihansi Hydropower Plant – Curved Sheets Repair and Installation + Ground stability status study to check potential ground failure modes. Site Morogoro Kihansi. Fully contracted.
6. Shanta Gold Mine Singida – Construction of workshop, plant system installation, concrete works and roofing works. Site Singida – workforce sub-contracted.
7. Tanica Instant Coffee Public Ltd Co - supply of staff uniform and personal protective gears.



Contact Us

We promise to offer our clients a wide range of mining and engineering services at a very competitive price.

We continually strive to understand and deliver each and every company's unique service requirement; working environment, and safety standards, and support our clients that they are meeting the highest mining and engineering standards possible with the right support from KMC Mining & Engineering Services.

**Leading Mine Services
Contractor Company**

**Mining &
Engineering Solutions**

Contacts:

Eng. Agnes C. Mchacho

Operations Manager

Email: kmcminingtz@gmail.com

Cell: [+2 55 693 932 353](tel:+255693932353)



No. 7692

CONTRACTORS REGISTRATION BOARD

CERTIFICATE OF REGISTRATION

This is to Certify that

*KMC Mining & Engineering Services
Company Limited*

is registered as

BUILDING CONTRACTOR

Class Six

Registration No. **B6/1526/05/2022** Category **Local**

In accordance with the provisions of The Contractors Registration

Act No. 17 of 1997

In witness whereof the common seal has been affixed

hereto on this **5th** day of **May, 2022**


Registrar




Chairman

This Certificate is held subject to the By-laws made under the Act.

THE UNITED REPUBLIC OF TANZANIA
MINISTRY OF HEALTH
GOVERNMENT CHEMIST LABORATORY AUTHORITY
P.O. BOX 164, DAR ES SALAAM



REGISTRATION CERTIFICATE

(Made under Section 29 of the ICCA CAP 182)

I hereby certify that **M/S KMC MINING & ENGINEERING SERVICES CO. LTD** of **P.O. BOX 459, MWANZA** with premise at **Plot No. 2, COPCOT BOMBAMBILI street, Geita, Geita** has been approved and registered in Tanzania to operate as **DISTRIBUTOR, EXPORTER, IMPORTER, STORAGE, TRANSPORTER** of chemicals under **Industrial and Consumer Chemicals Act** and granted Registration No. **B003-C000050**

The special conditions attached to this certificate are:

1. **Awarded Full Registration as per Section 22(1) of the Act**
2. **Specific Requirements will apply to Highly Hazardous and Restricted Chemicals appearing in the Third, Sixth, Seventh and Eighth schedule to the Act.**

This certificate remains valid from **May 21, 2024 to May 20, 2029**

Granted on **May 21, 2024**

Signed:

REGISTRAR





C.1

TANZANIA



Certificate of Incorporation of a Company

Section 15

No: 153835403

I HEREBY CERTIFY THAT

**KMC MINING & ENGINEERING SERVICES COMPANY
LIMITED**

is this day incorporated under the Companies Act, 2002
and that the Company is Limited.

GIVEN under my hand at Dar es Salaam this **20th** day of
OCTOBER TWO THOUSAND AND TWENTY ONE.



PRINC ASST. REGISTRAR OF COMPANIES

CTIN: 2468372



TANZANIA REVENUE AUTHORITY

CERTIFICATE OF REGISTRATION FOR TAXPAYER IDENTIFICATION NUMBER (TIN)

(ISSUED UNDER SECTION 23 OF THE TAX ADMINISTRATION ACT 2015)

THIS IS TO CERTIFY THAT

KMC MINING & ENGINEERING SERVICES COMPANY LIMITED

HAS BEEN REGISTERED WITH THE TANZANIA REVENUE AUTHORITY
AND ASSIGNED THE TAXPAYER IDENTIFICATION NUMBER

153-835-403

WITH EFFECT FROM: 20 October 2021

TRA LOCATION: GEITA

TAX OFFICE: GEITA

PHYSICAL LOCATION:

STREET / AREA: NEAR BY WAJA GIRLS HIGH SCHOOL

HERBERT M.T. KABYEMELA

COMMISSIONER FOR DOMESTIC REVENUE

OFFICIAL SEAL

NOTE: THE REQUIREMENTS UNDER WHICH THIS CERTIFICATE IS ISSUED ARE STATED OVERLEAF



TANZANIA REVENUE AUTHORITY

Certificate of Registration for Value Added Tax (VAT)

(ISSUED UNDER SECTION 32(4) OF THE VALUE ADDED TAX ACT NO. 10 OF 2014)

THIS IS TO CERTIFY THAT
KMC MINING & ENGINEERING SERVICES COMPANY LIMITED

WHOSE TAXPAYER IDENTIFICATION NUMBER (TIN) IS

153-835-403

HAS BEEN REGISTERED FOR VALUE ADDED TAX (VAT)

AND ASSIGNED VAT REGISTRATION NUMBER (VRN)

40-047851-T

FOR BUSINESS LOCATED AT **NEAR BY WAJA GIRLS HIGH SCHOOL**
Geita

WITH EFFECT FROM **23 June 2022**

GIVEN UNDER MY HAND

THIS **23rd** **DAY OF** **June 2022**

HERBERT M.T. KABYEMELA
COMMISSIONER FOR VAT



NOTE: THE REQUIREMENTS UNDER WHICH THIS CERTIFICATE IS ISSUED ARE STATED OVERLEAF

